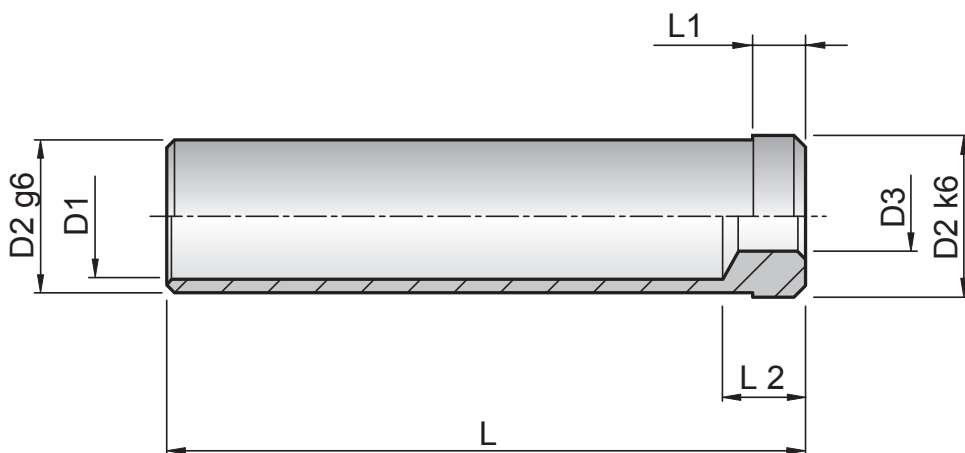


Material: 1.7131 - Hardness: 61-63 HRC



Code	D2	L	D1	D3	L2	L1	Code	D2	L	D1	D3	L2	L1									
BC2240	22	40	17	12	13	6	BC3460	34	60	26	19	13	6									
BC2260		60					BC3480		80													
BC2280		80					BC34100		100													
BC22100		100					BC34120		120													
BC22120		120					BC34140		140													
BC22140		140					BC34160		160													
BC22160		160					BC3660		36					60	26	19	13	6				
BC2860	28	60	21	15	13	6	BC3680	36	80	26	19	13	6									
BC2880		80					BC36100		100													
BC28100		100					BC36120		120													
BC28120		120					BC36140		140													
BC28140		140					BC36160		160													
BC28160		160					BC4060		40					60	33	25	13	6				
BC3060		30					60		25					15	13	6	BC4080	40	80	33	25	13
BC3080	80		BC40100	100																		
BC30100	100		BC40120	120																		
BC30120	120		BC40140	140																		
BC30140	140		BC40160	160																		
BC30160	160																					